

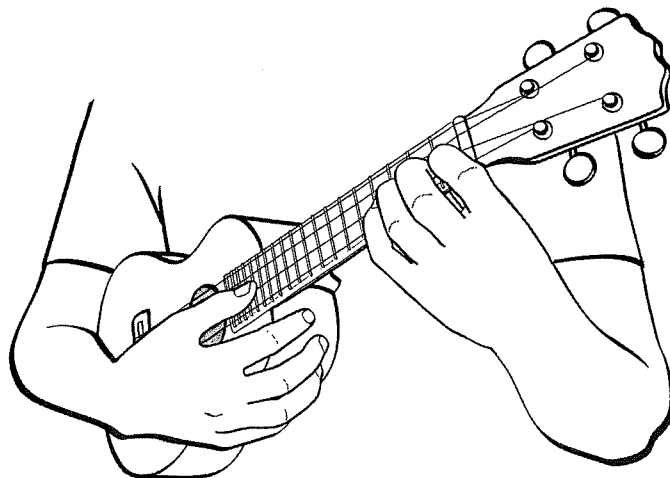
# Lesson 1: The Open Strings

The open strings of the ukulele are  
g, c, e, and a.

4th	3rd	2nd	1st
g	c	e	a

The diagram shows a simplified fretboard with four strings and four frets. The strings are labeled from left to right as 4th, 3rd, 2nd, and 1st. Below the fretboard, a musical staff in treble clef shows the notes for the open strings: g, c, e, and a. Dashed lines connect the labels 'g', 'c', 'e', and 'a' on the fretboard to their respective notes on the staff.

Hold the ukulele flat against you. Use the cushion of your thumb to **pick each string** where the neck and the body of the ukulele meet.




\* Can be tuned to "high g" or "low g." "Low g" tuning (which requires a thicker string) is recommended for this book.

# Lesson 1 (cont'd)

1.




2.



3.



4.



THIS IS ONE "MEASURE"  
OR "BAR" OF MUSIC.

5.



6.

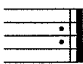


7.

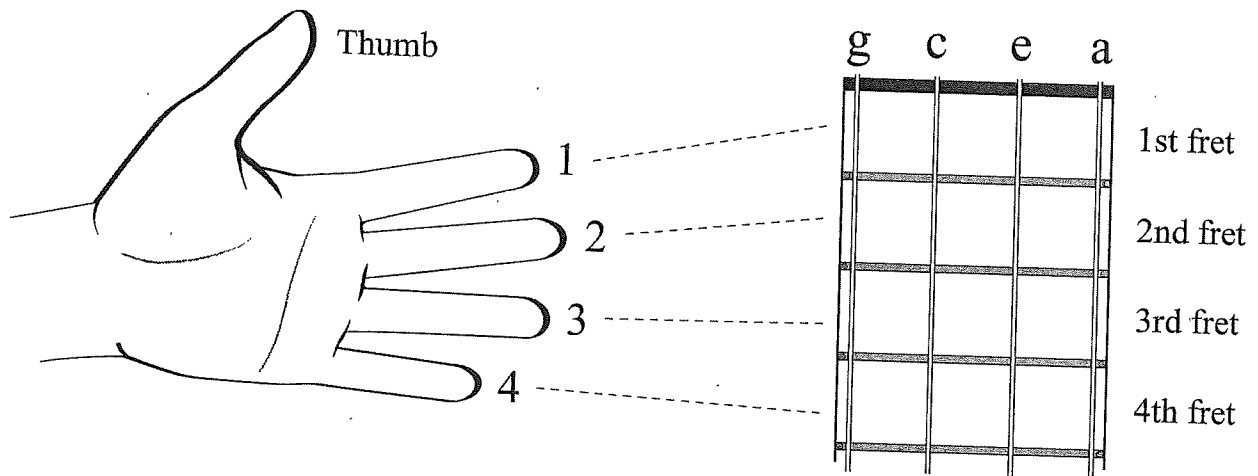


8.

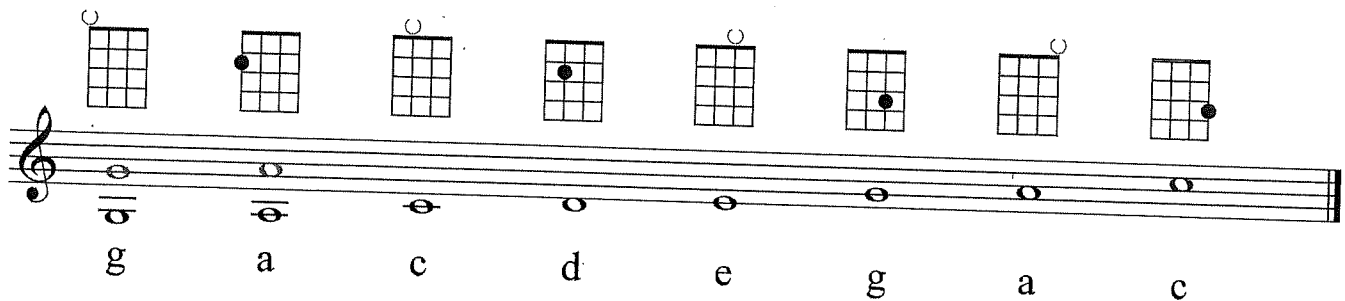


A repeat sign  means play again from the beginning!

# Lesson 3: The Pentatonic Scale



How many **letter names** are there in this pentatonic scale?



Keep your left thumb **behind the neck** of your uke to support your fingers.  
Press until you get a clean, clear sound.



WHAT DOES THE WORD "PENTATONIC" MEAN?  
WHY IS THIS SCALE CALLED THE "PENTATONIC SCALE"?

# Lesson 3 (cont'd)

1.



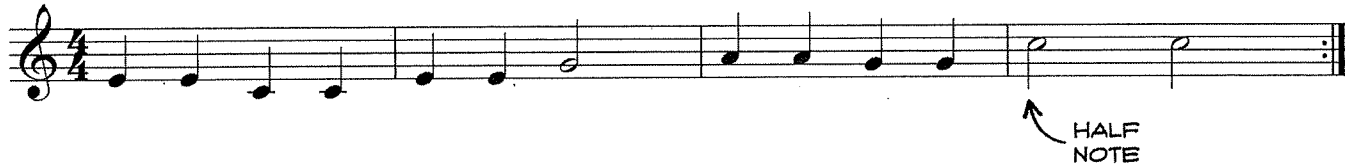
2.



3.



4.



5.



6.



★ PICK AND SING BY EAR: AULD LANG SYNE.